

Aeromagnetic and Radiometric Survey Commences

HIGHLIGHTS

- Aeromagnetic and radiometric survey underway at the Bobalong and Holly Kaolin projects in Western Australia
- MagSpec Airborne Surveys Pty Ltd (“MagSpec”) contracted to fly 5,572 line-kilometres of gradiometer magnetics and radiometric surveys at 100m line spacing via a fixed wing Cessna 206
- Program duration of 10 days with results available for review Q4 2022
- Targets generated from the survey to guide future drilling campaigns

Pinnacle Minerals Ltd (ASX: **PIM**) (**Pinnacle**, the **Company**) is pleased to announce that MagSpec has been engaged to conduct an aeromagnetic and radiometric survey over the entirety of the highly prospective Bobalong and Holly Kaolin projects in Western Australia. The survey will consist of 5,572 line-kilometres of gradiometer magnetics and radiometric surveys at 100m line spacing.

The new data will improve the total geological understanding of the project, in particular the identification of dolerite dykes and fault zones which will identify ideal “traps” for thick, clean kaolinite development. The program has a duration of 10 days and results will be available for review in Q4 2022.

Pinnacle Minerals CEO, Nic Matich, commented:

“The results of this survey are expected to compliment prior field observations and enable us to generate a suite of high priority and quality targets. These targets will be systematically explored in future drilling campaigns with the mineralisation identified to be added to our maiden Mineral Resource at Bobalong (“Bills’ Middle”) which is due for release this Quarter.”

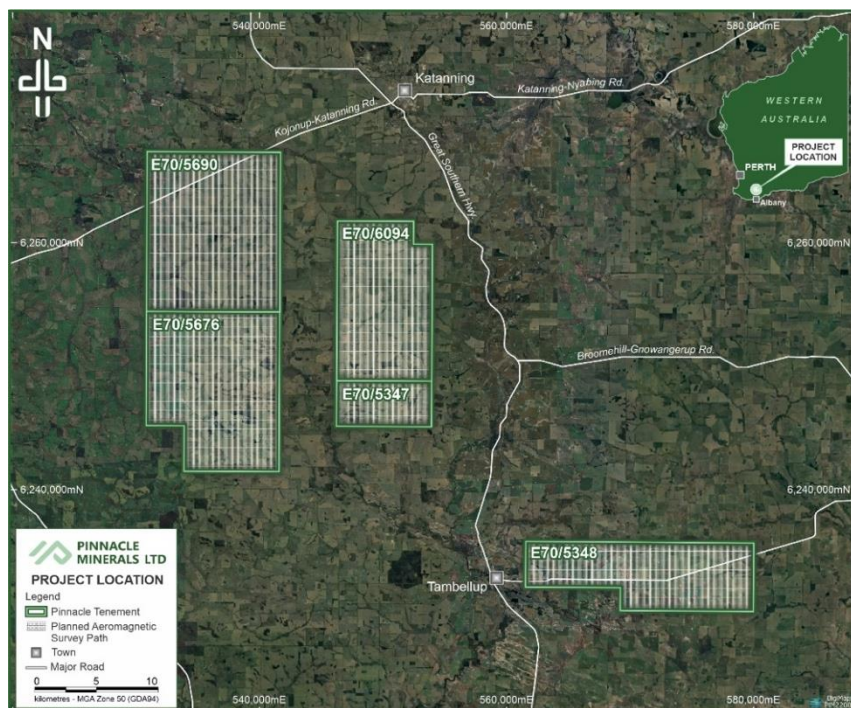


Figure 1: Planned aeromagnetic survey path

Pinnacle Minerals Ltd
ACN: 655 033 677
ASX: **PIM**

Issued Capital
36,375,000 Shares
9,250,500 Options

Australian Registered Office
283 Rokeby Road
SUBIACO WA 6008
T: + 61 8 9426 0666
E: admin@pinnacleminerals.com.au

Directors
WILLIAM WITHAM – Non-Executive Chairman
ROBERT HODBY – Executive Director
LINCOLN LIU – Non-Executive Director
STEPHEN ROSS – Non-Executive Director

This announcement has been authorised for release by the Board of Pinnacle Minerals Ltd.

For further information, please contact:

<p>Chief Executive Officer Nic Matich Pinnacle Minerals Limited T: + 61 8 9426 0666 E: admin@pinnacleminerals.com.au</p>	<p>Media and Investor Inquiries Jane Morgan Jane Morgan Management +61 432 279 828 E: jm@janemorganmanagement.com.au</p>
---	---

About Pinnacle Minerals

Pinnacle Minerals Ltd (ASX: PIM) is an ASX listed technology metals company focused on delivering shareholder value via the systematic exploration and development of its portfolio of kaolin and halloysite prospective projects in Western Australia and South Australia. The Company is focused on delineating resources at its advanced Bobalong and Holly Kaolin Projects in the Great Southern region of Western Australia. Drilling and a scoping study have been completed at Bobalong, with results indicating the potential for a high value direct shipping ore (DSO) product. The White Knight and Camel Lake Projects are strategically located adjacent to Andromeda Metals' (ASX: ADN) high-grade kaolin-halloysite discoveries in South Australia. Pinnacle is focused on the exploration and evaluation of the kaolin and halloysite potential of these projects.

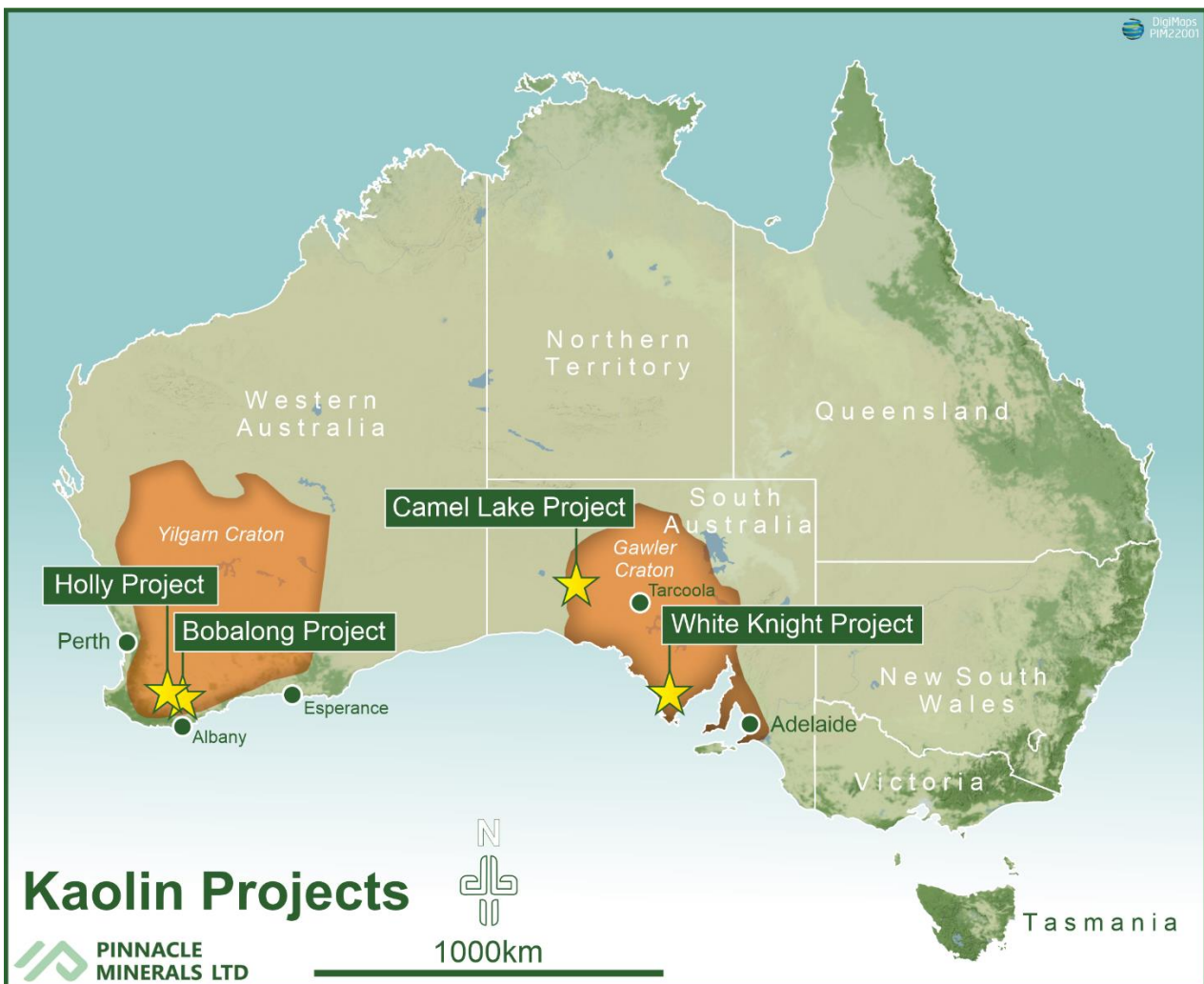


Figure 2: Pinnacle Minerals Projects' Location Map